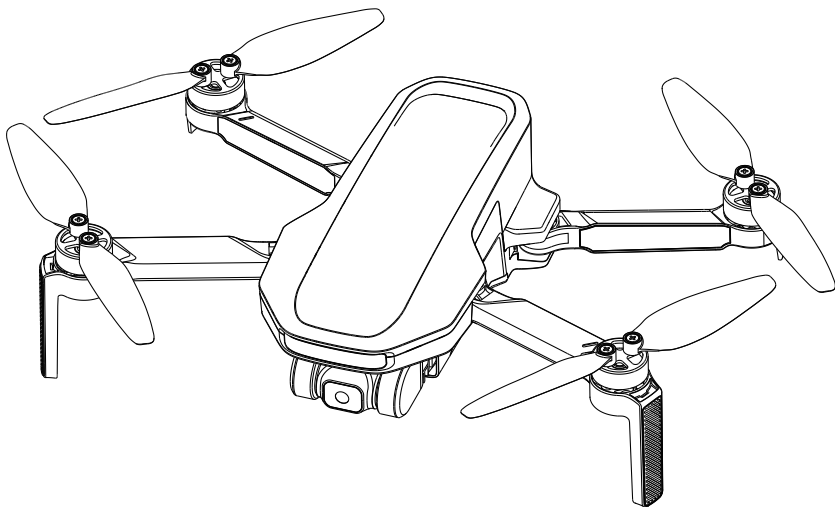


# Potensic Atom **LT**



**DANGER**  
Only suitable  
for ages 16+



## User Manual

V01. 24. 07

Email: [support@potensic.com](mailto:support@potensic.com)  
Email: [support.uk@potensic.com](mailto:support.uk@potensic.com)  
Email: [support.de@potensic.com](mailto:support.de@potensic.com)

Email: [support.fr@potensic.com](mailto:support.fr@potensic.com)  
Email: [support.it@potensic.com](mailto:support.it@potensic.com)  
Email: [support.es@potensic.com](mailto:support.es@potensic.com)

Email: [support.jp@potensic.com](mailto:support.jp@potensic.com)  
Web: [www.potensic.com](http://www.potensic.com)  
FB: [www.facebook.com/Potensic](https://www.facebook.com/Potensic)

# Contents

<b>1. Disclaimer &amp; Precautions</b>	<b>02</b>	<b>6. PotensicPro App</b>	<b>20</b>
1.1 Disclaimer	02	6.1 App Homepage	20
1.2 Safety Precautions	02	6.2 Flight Interface	21
1.3 Warning & Prompts	02		
<b>2. Reading Tips</b>	<b>03</b>	<b>7. Flight</b>	<b>24</b>
2.1 Legend	03	7.1 Requirements of Flight Environment	24
2.2 Suggestions of Use	03	7.2 Precautions of Flight	25
2.3 Tutorial Video/Download App	03	7.3 Connection	25
2.4 Registration & Help	03	7.4 Flight Modes	25
2.5 Technical Terms	04	7.5 Compass Calibration	26
		7.6 Beginner Mode	26
<b>3. Overview</b>	<b>04</b>	7.7 Takeoff/Landing/Hovering	27
3.1 Introduction	04	7.8 Smart Flight	28
3.2 Drone Diagram	05	7.9 Return(RTH)	30
3.3 Remote Controller Diagram	06	7.9 Emergency Stop	31
3.4 Preparing the Drone	07		
3.5 Preparing the Remote Controller	07	<b>8. Appendix</b>	<b>32</b>
3.6 Charging/Startup and Shutdown	08	8.1 Specification & Parameters	32
		8.2 Post-Flight Checklist	33
<b>4. Drone</b>	<b>09</b>	8.3 Maintenance Instructions	33
4.1 Positioning	09	8.4 Troubleshooting Procedures	33
4.2 Drone Status Indicator	09	8.5 Risk and Warnings	34
4.3 Smart Battery	10	8.6 Disposal	34
4.4 Propellers	12	8.7 C0 Certification	34
4.5 Flight Data	13		
4.6 Single Axis Gimbal Camera	13		
<b>5. Remote Controller</b>	<b>14</b>		
5.1 Overview	14		
5.2 Control Stick Mode	15		
5.3 Function	16		
5.4 Antenna Angle	18		
5.5 Remote Controller Calibration	19		

# 1. Disclaimer & Precautions

## » 1.1 Disclaimer

Drones are products with potential dangers and relatively complex operations. Prior to usage, it is crucial to thoroughly read the complete User Manual to grasp basic knowledge and become familiar with the drone's functions. For the initial use of ATOM LT, it is recommended to operate it in GPS mode in a spacious outdoor area to acquaint yourself with its functions.

Strictly adhere to the Manual's operational instructions and precautions to ensure safe and correct usage.

Users below the age of 16 should be supervised by an adult, and the product should be kept out of reach of children.

The Company disclaims responsibility and does not provide warranty services for any direct or indirect losses (including property loss and personal injury) resulting from the user's failure to follow the Manual's safety guidelines.

Avoid dismantling any part of the product except for propellers or modifying it without official guidance; users will be accountable for any consequences arising from such violations.

For assistance with usage, operation, and maintenance issues, feel free to contact our local dealer or the Company.

Potensic reserves the final interpretation rights of this document and related product documents, and the information is subject to change without notice. For the latest updates, please visit <https://www.potensic.com>.

## » 1.2 Safety Precautions

### **Keep away from obstacles and crowds**

To ensure the safety of both the user and those around, please keep the product away from crowded areas, high-rise buildings, and high-voltage cables. Additionally, refrain from using it in severe weather conditions such as strong winds, heavy rain, and thunderstorms. This precaution is necessary as the product may exhibit unpredictable flight speeds, status fluctuations, and potential hazards.

### **Keep off moisture**

To prevent anomalies or damage caused by humidity affecting precise electronic components and mechanical parts inside the product, please ensure it is kept away from moisture.

### **Safe operation**

When operating the drone, the likelihood of unforeseen risks rises when users are fatigued, in poor mental condition, or lack experience. To ensure safety, it is essential to refit or repair the product using original parts. Operate the product strictly within specified limits, and be sure to adhere to local safety regulations.

### **Keep away from high-speed revolving parts**

While the product's propellers are spinning at a high speed, keep it away from crowds and animals to prevent scratches or disturbances. Avoid touching the spinning propellers with your hands.

### **Keep away from heat source**

To prevent anomalies, deformation, and potential damage, keep the product away from heat and high-temperature exposure. This precaution is especially crucial as the product comprises metal, fiber, plastic, and electronic elements.

## » 1.3 Warning & Prompts

01. Keep the package and manual in a secure place as they contain important information.
02. Users are responsible for ensuring that the use of this drone does not cause harm to others or their property.
03. Our company and dealers are not liable for losses and personal injuries resulting from improper use or operation.
04. Users must strictly follow the procedures in the user manual for installing and testing the drone. Maintain a minimum distance of 1 to 2 meters from individuals during flight to prevent collisions and injuries.
05. The product should be assembled by an adult. Users aged below 16 should not handle the product alone. The battery should be charged under the supervision of an adult and should be kept away from flammable materials during the charging process.

06. The product contains small parts. Please place them out of reach of children to prevent accidental ingestion.
07. Do not operate the product over roads or standing water to avoid accidents.
08. Dismantling or refitting the product, except for the propellers, is forbidden, as it may lead to drone malfunctions.
09. Please recharge the smart battery with a USB charger that conforms to FCC/CE standards.
10. The remote controller has a built-in 3.7V lithium battery which needs no replacement.
11. Do not short-circuit or squeeze the battery to avoid explosion.
12. Do not short-circuit, break down or throw the battery in fire or place it in a hot place (in fire or near an electric heater).
13. Keep a safe distance from the high-speed revolving propellers; avoid using the product in crowds to prevent scratches or injuries.
14. Do not use the product in places with strong magnetic field, such as near high-voltage cable, buildings that contain metals, automobiles and trains; otherwise, the connection stability can be compromised.
15. Please make sure to thoroughly understand local laws and regulations to avoid any unauthorized use of the drone.
16. To comply with the requirements of the aeronautical radio magnetic environment, during the period of radio control orders issued by the relevant national authorities within the specified regions, the use of remote controller should be suspended as instructed.
17. Please refrain from flying at low altitudes over water surfaces.
18. Please stay away from airports, flight paths, and other restricted areas.

## 2. Reading Tips

### » 2.1 Legend

 **Prohibited**

 **Important**

 **Operation & use prompts**

 **Technical Terms and reference information**

### » 2.2 Suggestions of Use

1. It is advisable to watch the tutorial video and **Quick Start Guide** before referring to the **Manual**.
2. Be sure to read the **Disclaimer & Precautions** section first when consulting the **Manual**.

### » 2.3 Tutorial Video / Download App

Scan the QR code on the right and you can:

1. Download PotensicPro App (hereinafter referred to as "the App").
2. Watch the tutorial videos.
3. Access the latest User Manual.
4. Learn about the frequently asked questions(FAQ)



### » 2.4 Registration & Help

It's required to set up an account when using the App for the first time to have better user experience.

#### Registration Procedures

1. Enter your email;
2. Set your password;
3. Check and agree with the Protocols;
4. Register.

You can log into the App after registration.

Note: An Internet connection is required during the registration.

## Help

Thanks for purchasing Potensic Atom LT. Before using the drone for the first time, we recommend that you read the user manual carefully.

Please contact our support team at [support@potensic.com](mailto:support@potensic.com) if you encounter any problem or issue with the drone. Make sure to submit your order ID and the details of the issue.

## » 2.5 Technical Terms

<b>IMU</b>	IMU (inertial measurement unit), the most important core sensor of the drone.
<b>Compass</b>	Geomagnetic sensor, which enables the drone to identify the direction.
<b>Barometer</b>	Atmospheric pressure sensor, which enables the drone to determine the altitude through atmospheric pressure.
<b>Lock/unlock</b>	Refers to the transition of the drone's motors from a stationary state to idle rotation.
<b>Idling</b>	Once unlocked, the motor will start revolving at a fixed speed, but it has insufficient lifting force to take off.
<b>Auto return</b>	The drone will return to HOME point automatically based on GPS positioning.
<b>EIS</b>	Electronic Image Stabilization; the camera will detect the data of high-frequency vibration and eliminate picture flutter through algorithm.
<b>Drone head</b>	Position of the drone camera.
<b>Throttle control stick</b>	Ascend or descend the drone.
<b>Pitch control stick</b>	Fly the drone forward or backward.
<b>Roll control stick</b>	Fly the drone leftward or rightward.
<b>Yaw control stick</b>	Enables the drone to rotate clockwise or anticlockwise.

## 3. Overview

This chapter introduces the functional characteristics of Atom LT, as well as the component of the drone and the remote controller.

### » 3.1 Introduction

Atom LT features foldable arms for convenient portability, with a lightweight body weighing less than 250g. Equipped with a GPS sensor, the drone enables positioning and automatic return. The camera utilizes a 1/3-inch Sony CMOS image sensor, capable of capturing high-definition 2.5K/30FPS video and 2.5K photos. Atom LT employs proprietary ShakeVanish™ electronic image stabilization technology for clear and stable footage.

Atom LT's remote controller utilizes the PixSync™ 2.0 2.4G digital transmission technology, achieving a maximum communication distance of up to 4km and 576P video transmission in ideal conditions. The controller features a retractable and foldable design, providing a placement for your mobile device when unfolded. When connected to the controller via a USB cable, you can operate and configure your drone through the App, as well as view high-definition video transmission. The built-in lithium battery in the remote controller has a maximum working time of approximately 2.3 hours.

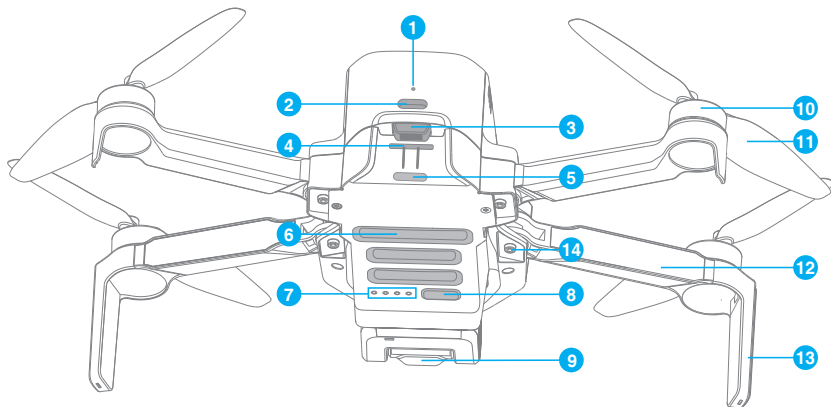
Atom LT utilizes proprietary SurgeFly™ flight control technology, achieving a maximum flight speed of 16m/s (52ft/s) and a maximum flight time of approximately 40 minutes, with resistance against wind up to Level 5.

- ⚠️ • **Test conditions of the max. flight time:** Fly at an even speed of 5m/s at 25°C and in breezeless condition.
- **Test conditions of the max. transmission distance:** Measured at an open and no-interference environment, with a flight height of 120m, and without considering the return of the drone.
- **Power consumption will increase considerably when the drone is returning against the wind.** If you receive a prompt of encountering strong wind from the App, please make sure to lower the flight altitude and return in time to ensure safety of the drone.

#### Pre-Flight Checklist:

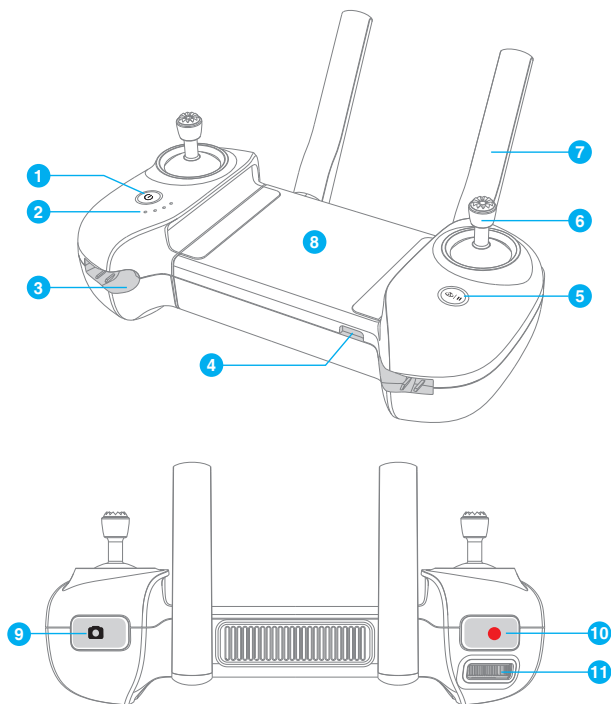
1. Pay attention to the local weather forecast and make sure it is suitable for flying the drone.
2. Make sure the battery is fully charged.
3. Make sure the firmware is updated to the latest version.
4. Make sure the flight environment is open and free of interference.
5. Before takeoff, make sure the battery is secured and the buckle pops out correctly, and no deformed propellers and loose screws.
6. Power on the drone on open and level ground, wait for the drone to enter GPS Mode before takeoff, and pay attention to the HOME point.

## » 3.2 Drone Diagram



- |                         |   |
|-------------------------|---|
| 1. Charging indicator   | 8. Power/frequency pairing button       |
| 2. TYPE-C charging port | 9. Integrated single-axis gimbal camera |
| 3. Battery buckle       | 10. Brushless motor                     |
| 4. SD card slot         | 11. Propeller                           |
| 5. Tail indicator       | 12. Arm                                 |
| 6. Bottom cooling hole  | 13. Antennas                            |
| 7. Power indicator      | 14. Arm shaft                           |

## » 3.3 Remote Controller Diagram



### 1. Power button

Long press for 2s to power on/off.

### 2. Power indicator

Indicate the power level or other status of the remote controller.

### 3. Control stick slot

One slot respectively at the left and right side, which are used to store the sticks.

### 4. TYPE-C interface

To charge the remote controller/connect mobile device.

### 5. RTH / Pause button

Long press for 1s to return to HOME point automatically.

Short press to pause auto flight.

### 6. Control stick

### 7. Foldable double antennas

### 8. Placement for mobile device

To place mobile device.

### 9. Shoot button

Short press to shoot one picture.

### 10. Record button

Short press to start/stop recording.

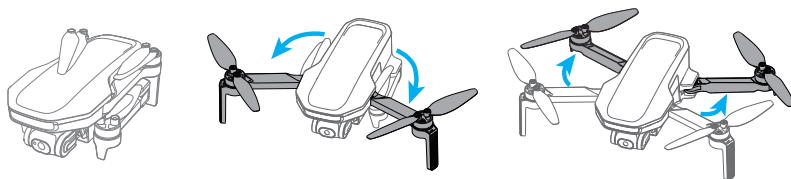
### 11. Thumbwheel

Dial the thumbwheel horizontally to control the tilt of the gimbal.

## » 3.4 Preparing the Drone

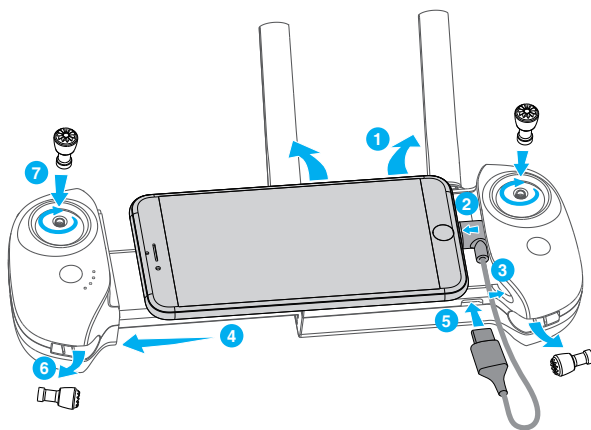
The product is delivered under folded status. Please unfold it as follows:

1. Unfold the front arm before the rear arm.
2. Unfold the propeller blades.

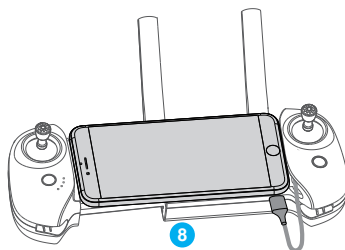


## » 3.5 Preparing the Remote Controller

Installation of mobile phone and control stick

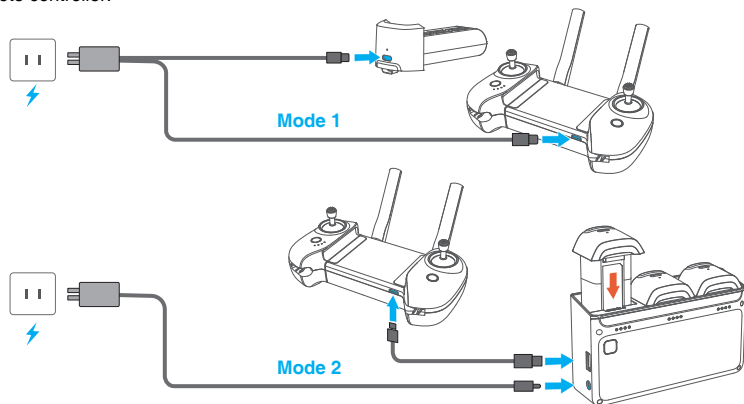


1. Unfold the antenna.
2. Connect your mobile phone to the USB cable.
3. Insert the part of your mobile phone with the USB cable into the slot of the remote controller.
4. Pull and open the remote control with both hands and fix your mobile phone stably.
5. Connect the other end of the USB cable to the remote controller.
6. Take out the sticks.
7. Screw in both control sticks clockwise.
8. Installation completed.



## » 3.6 Charging / Startup and Shutdown

Before the first flight, it is essential to wake up the battery, otherwise the drone won't start. Connect the TYPE-C charging port of the battery and a USB charger to the AC power supply to finish a single charging (USB charger is not included in the package. User can use a charger that conforms to FCC/CE specification to charge the battery). The red indicator will stay on during charging, and turn off automatically after charging is done. Users can charge the battery with the Parallel Charging HUB if Fly More Combo is purchased. For more details, please refer to the user manual of Parallel Charging HUB. The Parallel Charging HUB can also charge the remote controller.



- The shortest charging period is approx. 1h 25min through the TYPE-C charging port. Make sure your charger supports 5V/3A output in order to achieve this charging speed.
  - User is suggested to charge the battery through the Parallel Charging HUB, in order to charge 3 batteries quickly at the same time.
- 
- ⚠ It is suggested to remove the battery from the drone to charge for safety reasons; otherwise, the drone won't power on if the battery is being charged in the drone.
  - If the charging cable is connected while the drone is on, it will power off automatically and the charging will continue.
  - The battery may become too hot after use; do not charge it until it cools down; otherwise, charging can be rejected by the smart battery.
  - Charge the battery every three months to sustain the cell's activity.
  - Please connect the original cable or any cable that supports over 3A current to the TYPE-C port; otherwise, it may cause charging failure or battery damage.

### Startup

**Drone:** Make sure the battery is inserted in the battery bin, press and hold the drone's power button until all battery indicators are on, then release to finish the startup.

**Remote controller:** Long press the power button until all indicators are on, and then release the button to finish startup.

### Shutdown

**Drone:** Long press the power button until all indicators are off, and then release the button to shut down.

**Remote controller:** Long press the power button until all indicators are off, and then release the button to shut down.

## 4. Drone

ATOM LT consists of a flight control system, a communication system, a positioning system, a power system and a smart flight battery. This chapter sets down the functions of all parts of the drone.

### » 4.1 Positioning

Atom LT adopts Potensic's new SurgeFly™ flight control technology, enabling GPS positioning: GPS positioning: Provide precise positioning and navigation to the drone; support precise hovering, smart flight and auto return.

If the GPS system fails, the flight control will automatically switch to Attitude Mode, under which, the drone fails to realize stable hovering and the user needs to correct the flight behavior manually through the control stick.

The difficulty of drone handling will be increased greatly in Attitude Mode; make sure to master the behaviors and operation of the drone in this mode prior to use; avoid flying the drone over a long distance to avoid risks due to failed judgment of drone behaviors.

- ⊘ • The difficulty of controlling the drone will increase dramatically in ATTI Mode so make sure to master the operation of the drone in this mode. Always keep the drone within sight in order to avoid risks in case of failed judgment of the drone's attitude and direction.

### » 4.2 Drone Status Indicator

<b>Start-up/ Shut-down</b>	Startup / Shutdown in progress: Green indicator is solid on			
<b>Flight status</b>	<b>GPS positioning</b>	<b>Attitude mode</b>		<b>Return</b>
	Indicator flashes slowly in green	Indicator flashes slowly in blue		Indicator flashes slowly in red
<b>Warning &amp; Error</b>	<b>Remote controller has no connection with the drone (disconnected)</b>	<b>Low battery</b>	<b>Sensor error</b>	<b>Emergency stop of propeller</b>
	Indicator is in solid blue	Indicator flashes quickly in red	Indicator is in solid red	The indicator repeatedly briefly lights up in red and then remains off for an extended period.
<b>Upgrade &amp; calibration</b>	<b>Compass calibration (horizontal)</b>	<b>Compass calibration (vertical)</b>	<b>Frequency pairing mode</b>	<b>Upgrade mode</b>
	Indicator alternately flashes between red and green	Indicator alternately flashes between blue and green	Indicator flashes quickly in green	Indicator flashes quickly in blue


## » 4.3 Smart Battery

### 4.3.1 Function

Atom LT's smart battery is equipped with high-energy cells and utilizes an advanced battery management system. Detailed information is as follows:

Basic Parameters			
Model: DSBT02C			
Cell Qty.	2 series	Battery Capacity	3000mAh
Rated Voltage	7.2V	Charge Completion Voltage	8.4V
Charging Mode	TYPE-C/ Parallel Charging HUB	Max. Charge Current	TYPE-C: 5V/3A Parallel Charging HUB: 8V/2.2A x 3

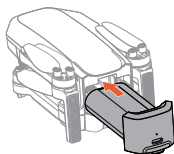
Function	Description
Balance protection	During charging, the voltages of the battery cells are automatically balanced.
Auto-discharging protection	After being fully charged, the battery will start to auto-discharge to 50%-70% of the battery level when it's left idle for 5 days to protect the cells.
Overcharge protection	The battery stops charging automatically once fully charged.
Temperature protection	Charging will stop automatically if the temperature of the battery is below 0°C or above 45°C to prevent damage.
Auto-limit of charging current	The battery will restrict the charging current automatically if an excess current is detected to protect the cells.
Over-discharge protection	Discharging stops automatically to prevent excess discharge when the battery is not in flight use. The battery will enter Hibernation mode and it's recommended to charge the battery.
Short-circuit protection	The power supply will be automatically cut if a short-circuit is detected to protect the drone and the battery.
Battery health monitoring	The BMS will monitor the battery health, and prompt warnings if a damaged battery cell is detected so you can replace the battery in time.
Communication function	Information about charge cycles and remaining battery level is transmitted to the drone and you can view it in the App.

-  If the battery is not used for a long time, it needs to be charged every three months to ensure its health.
- Please store the battery in a cool and dry place where children cannot reach.

### 4.3.2 Battery Installation & Removal

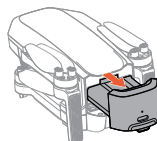
#### Installation:

Insert the battery in the battery compartment and secure the buckle. You will hear a clicking sound when the battery is fully engaged.

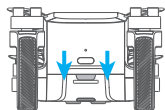


#### Removal:

Press the battery buckle and detach the battery from the battery compartment to remove it.



**⚠️ After inserting the battery, please ensure that the battery buckle snaps back into place. This is crucial for flight safety.**



**Make sure to power off the product before removing the battery.**



**Buckle is in position, safe**



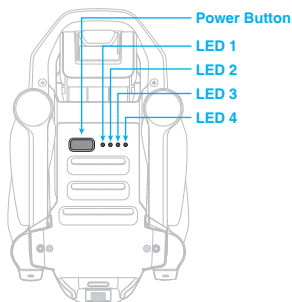
**Buckle is not in position, which may result in the battery falling during flight.**

### 4.3.3 Charging

See 3.6 for charging method

### 4.3.4 View Power Level

Once the battery is inserted in the drone, short press the power button to view the power level of smart battery, as shown in the picture below:



LED 1	LED 2	LED 3	LED 4	Current power level
☀️	●	●	●	0%~25%
☀️	●	●	●	25%~30%
☀️	☀️	●	●	30%~50%
☀️	☀️	●	●	50%~55%
☀️	☀️	☀️	●	55%~75%
☀️	☀️	☀️	●	75%~80%
☀️	☀️	☀️	☀️	80%~97%
☀️	☀️	☀️	☀️	97%~100%
☀️	☀️	☀️	☀️	

☀️ Indicator is on      ☀️ Indicator is flashing      ● Indicator is off

### 4.3.5 Operation Instructions of Smart Battery at High/Low Temperature

When the battery temperature is  $< 5^{\circ}\text{C}$ , the App will prompt a low temperature warning of the battery, and the battery needs to be preheated before flying.





When the battery temperature is  $> 60^{\circ}\text{C}$ , the App will prompt a high temperature warning of the battery, and the drone will not be able to fly.

**⚠️ The discharge capacity will be weakened greatly and flight duration will reduce at a low temperature, which is normal.**

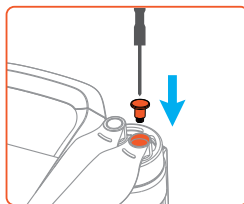
- Avoid long-term running at a low temperature, otherwise, the battery life can be shortened.

## » 4.4 Propellers

There are two types of Atom LT propellers, which are designed to spin in different directions. Marks are used to indicate which propellers should be attached to which motors, the two blades attached to one motor are the same.

	Propeller	Installation Instructions	Schematic Diagram of Installation
Marked propeller		Install the marked propeller blades on marked arm	
Unmarked propeller		Install the unmarked propeller blades on unmarked arm	

- Use the the screwdriver from the package to mount the propellers.
- When replacing the propeller blades, it is easier to handle by gripping the motor with your hand.



- ⚠️ • Make sure you attach the marked propellers to the motors of the arm with marks and the unmarked propellers to the motors of the arm without marks. Otherwise the drone will be unable to fly.
- If a propeller is broken, remove the two propellers and screws on the corresponding motor and discard them. Use two propellers from the same package. DO NOT mix with propellers in other packages.
- Propeller blades are sharp. Handle with care. DO NOT squeeze or bend the propellers during transportation or storage.
- Purchase the propellers separately if necessary.
- Stay away from the rotating propellers and motors to avoid injuries.
- Please check the propeller blades immediately if there are any jitters or speed loss in flight, and timely replace the propellers if it's damaged or deformed.
- Make sure the motors are mounted securely and rotating smoothly. Land the drone immediately if a motor is stuck and unable to rotate freely. Stop flying the drone and contact support if there is any abnormal sound with the motor.
- Make sure that the propellers are installed securely before each flight. Check to make sure the screws on the propellers are tightened.

- ⊘ • When mount or remove the propellers, do not put the screwdriver or other foreign materials inside the motors, otherwise the motor may be damaged.



## » 4.5 Flight Data

ATOM LT will record automatically the flight data and you can access it in the App.

Flight record displays the basic data for each flight.

Flight log records the detailed data of each flight. If you encounter any issue during the flight, you can report it in the App and upload the flight log if necessary to seek for assistance.

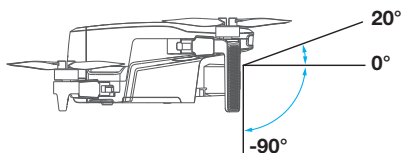
**⚠ All flight data is stored on your mobile device, and the company will not obtain any of your flight data unless you voluntarily upload it to the cloud seeking for assistance.**

## » 4.6 Single Axis Gimbal Camera

### 4.6.1 Single Axis Gimbal

The Atom LT camera is mounted with a single-axis gimbal, to adjust pitch angle freely from +20° to -90° (horizontal direction is 0°).

The angle of the gimbal can be adjusted by dialing the left thumbwheel of the remote controller.



**💡** • The gimbal will be recovered to -9° automatically after each startup.

**⚠** • Avoid collision and moving the lens by force as the gimbal contains precision elements.  
• Ensure that the gimbal is free from foreign matter, and the lens is clean before takeoff.  
• The gimbal is connected to the drone through elastic and shock absorption support, to eliminate camera vibration. Do not pull the gimbal by force. For any damage of shock absorption support, please contact the customer service for help.

**🚫** • Do not bind or paste any object on the gimbal. Otherwise, it may damage the drone.

### 4.6.2 Camera

Basic Parameters	
Sensor brand: SONY	Sensor size: 1/3"
Effective pixel: 12MP	Aperture: F2.2
FOV: 118°	Focus range: 3m ~ ∞
ISO range: 100~6400	Shutter range: 1/30~1/25,000s
Memory: Micro SD card	Shooting distortion: < 1% (after calibration)
Picture size: 2.5K(2560*1440)	Picture format: JPG
Video format: MP4	Codec: H.264
Video specification: 2.5K @30fps; 1080P@30fps	

**⚠** • Do not touch the lens after recording for a long period of time to avoid scald.  
• Do not record video when the drone is not flying; otherwise the drone will trigger overheat protection.

### 4.6.3 Image Storage

Videos and pictures recorded by ATOM LT will be stored on the SD card instead of the App or your phone gallery. Make sure to insert the SD card prior to flight. Otherwise, it's unable for ATOM LT to record videos or capture pictures. (SD card is not included in the pack list.)

You can preview and download the videos and pictures (the drone and the remote controller should be connected) in App.


#### SD Card Requirements


File format: FAT32, exFAT

Capacity: 4G-256G

Speed requirements: It is suggested to use SD card above U1 (UHS Speed Class 1) or C10 (Class 10)

---

 • The video downloaded from App is just 576P resolution used in video transmission. Please read SD card with computer or other device in order to acquire videos of higher definition.


-  • The recording can be terminated due to slow write-in when using the U1/C10 SD cards of certain brands.
- If important data is stored on your SD card, please backup them properly.
  - Do not insert or unplug the SD card when the product is powered on. It may lead to data damage or loss, or even SD card damage when inserting or unplugging SD card during video recording.
  - Potensic does not bear responsibility for any loss due to user's misoperation of SD card.
- 

## 5. Remote Controller

### » 5.1 Overview

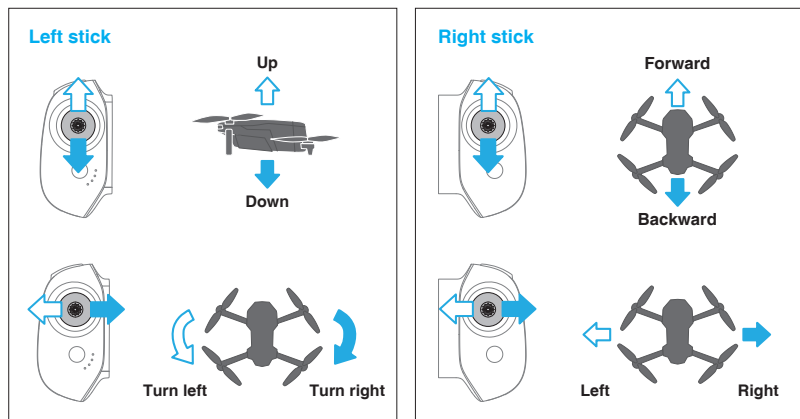
Potensic Atom LT is equipped with the **DSRC02A** Remote controller, which boasts Potensic long-range **PixSync™ 2.0** video transmission technology, offering a maximum transmission range of 4km/13,123ft and 576P when displaying video from the drone to **PotensicPro** on your mobile device. Easily control the drone and camera using the onboard buttons. The detachable control sticks make the remote controller easier to store. Thanks to the 2.4Ghz dual band antenna, in a wide-open area with no electromagnetic interference, **PixSync™ 2.0** smoothly transmits video feed at up to 576P.

The built-in battery has a capacity of 3000mAh and a maximum run time of 2.3 hours. There is a TYPE-C port for device connection. The remote controller charges the mobile device with a charging ability of 5V/500mA.

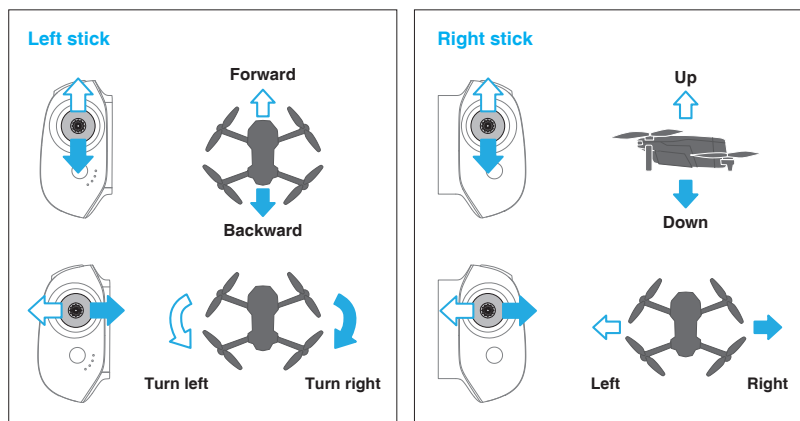
- 
-  • When used with different drone hardware configurations, the remote controller will automatically select the corresponding firmware version for updating and support the following transmission technologies enabled by the hardware performance of the connected drone models:
- a. Atom LT: PixSync™ 2.0    b. Atom SE: PixSync™ 2.0    c. Atom: PixSync™ 3.0
-

## » 5.2 Control Stick Mode

### Mode 1 (Left Hand Throttle)

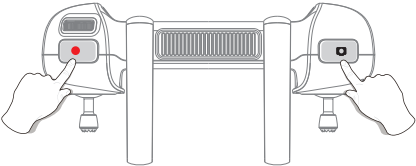


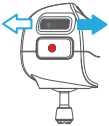


### Mode 2 (Right Hand Throttle)



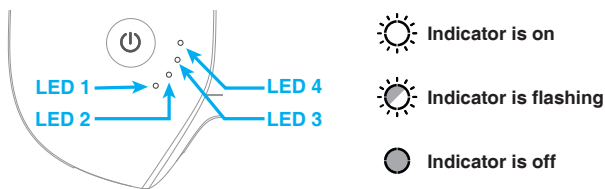
## » 5.3 Function

### 5.3.1 Function List

Charge	<ol style="list-style-type: none"> <li>1. Connect the USB Charger to the TYPE-C charging port.</li> <li>2. The battery is being charged when the LED indicators start flashing.</li> <li>3. Charging is completed when 4 LED indicators are solid on and data cable can be removed.</li> </ol>
Charge mobile phone	When a mobile device is connected, the remote controller automatically charges the device with a charging ability of 500mA@5V.
Indicator function	See 5.3.2
Flight control	See 5.2
Low battery prompt	When power level of the remote controller is lower than 10%, the remote controller will emit a beep sound every other second.
Auto shutdown	The remote controller will shut down automatically if it has no connection or operation for 20 mins.
One-key return	See 7.9
Pause	If the drone is performing an Intelligent Flight like Circle Flight or auto landing, press once to make the drone brake and hover in place. Press again to resume the drone flight.
Emergency stop	<p>For any emergency situations during the flight, press “Shoot” and “Record” button for 2s at the same time till the remote controller beeps, the drone will stop running and fall down.</p> 
Shoot	<p>Short press it to shoot one photo</p> <p>When the camera is in video mode, short press it to switch to photo mode</p> 
Record video	<p>Short press it to start/stop video recording</p> <p>When the camera is in photo mode, short press it to switch to video mode</p> 
Gimbal Dial	<p>Dial it to the right to increase the pitch angle (head up)</p> <p>Dial it to the left to decrease the pitch angle (head down)</p> 
Remote controller frequency pairing	See 5.3.3

### 5.3.2 Indicator

As shown in the picture below, the remote controller is fitted with 4 white LED indicators to indicate the power level and other status.



#### Charging indication

LED 1	LED 2	LED 3	LED 4	Current power level of battery
				0%~25%
				25%~50%
				50%~75%
				75%~99%
				99%~100%

#### Power indication (in use)

LED 1	LED 2	LED 3	LED 4	Current power level of battery
				0%~10%
				10%~25%
				25%~50%
				50%~75%
				75%~100%

#### Status indication

	LED 1	LED 2	LED 3	LED 4
Frequency pairing				
	Flashing slowly at the same time			
Upgrade mode				
	Turning on sequentially			
Start calibration				
	Flashing slowly at the same time			

### 5.3.3 Remote Controller Function

Atom LT drone and the remote controller can be used immediately after startup since they have passed frequency pairing before delivery. If a new remote controller or drone is used for the first time, user must conduct frequency pairing for them as follows prior to use:

1. Power on the remote controller and connect it with the mobile phone, launch PotensicPro App, tap Settings and select "Re-pair the drone" to enter the frequency pairing interface.
2. After powering on the drone, double press the power button until the drone indicator flashes quickly in green; now the drone is ready for frequency pairing.
3. Wait for about 7s, the remote controller beeps once to indicate frequency pairing is successful and the flight interface of the App will show realtime video transmission.

💡 • Make sure the remote controller is within 1m of the drone during frequency pairing, and there is no 2.4G frequency interference.

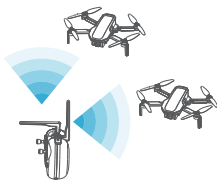
⚠️ • If frequency pairing fails, check if there are interferences nearby, or other drones are also in frequency pairing mode, or the remote controller is too far away or blocked. Eliminate the problems above and try again.

- Do not relocate or operate the remote controller and the drone during frequency pairing.

### » 5.4 Antenna Angle

Adjust the antenna angle along with the changes of drone altitude and distance, to ensure the best communication status of the remote controller.

Wider communication angle is ensured at a close distance in this mode.



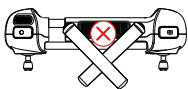
Keep both antennas pointing directly towards the drone to acquire a longer transmission distance.



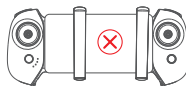
When the drone is directly above the remote controller, the transmission signal is significantly weakened due to the poor antenna angle. To address this, please lower the flight altitude or fly the drone horizontally for some distance, ensuring that the antenna points towards the drone as much as possible, as shown in the picture.



Do not cross the antenna in any case.



Do not press the antenna on your mobile device in any case.



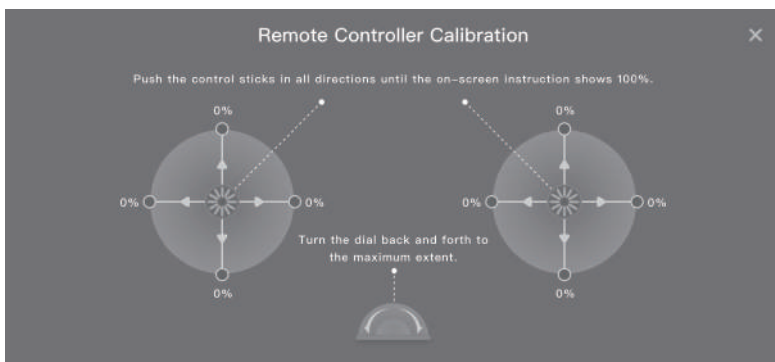
## » 5.5 Remote Controller Calibration

### 5.5.1 When to perform remote controller calibration

1. When the drone drifts automatically in one direction without any toggling of the control sticks.
2. When the drone automatically and continuously rotates in one direction.
3. When the control sticks are over-sensitive or lack sensitivity.

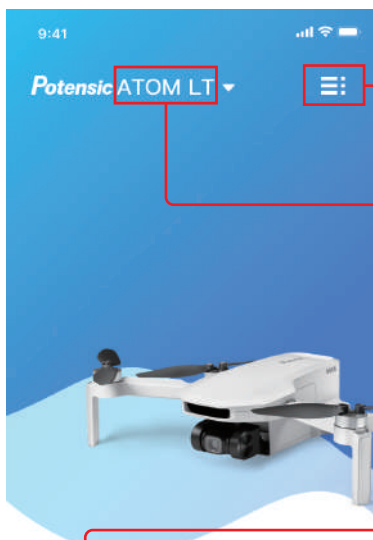
### 5.5.2 Calibration Procedure

1. Turn on the remote controller, and connect the mobile device, tap Settings in App, select "Remote Controller Calibration"
2. Make sure the control sticks are in the middle position and do not operate it before tapping to start the calibration.
3. Tap "Start Calibration", then follow the on-screen instructions and toggle the sticks in all directions until the App displays 100%, and rotate the dial back and forth to its maximum extent.
4. When App prompts "Calibration Succeeded", the remote controller calibration is completed.



## 6. PotensicPro App

### » 6.1 App Homepage



Tap to view the flight logs and Potensic Academy

Tap to choose the corresponding model. The drone model will be matched automatically if user has connected the remote controller to the mobile phone

Display connection status



Tap to enter the flight interface

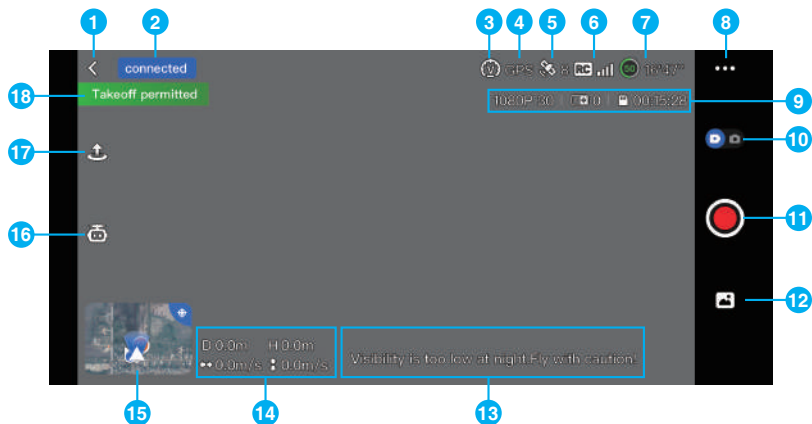


Me: Report a problem, modify account info, browse User Agreement, find the missing drone, close account and other settings

Photo album in App (Connect the drone to see the contents in the drone SD card)

Homepage of App

## » 6.2 Flight Interface



### 1. Return button:

Tap to return to the homepage



### 2. Navigation prompt bar:

Display drone status and flight mode

### 3. Flight mode:

-  Video
-  Normal
-  Sport

### 4. Positioning mode:

-  GPS GPS positioning
-  Atti Attitude mode, no positioning

### 5. GPS status: Display GPS signal status and quantity of satellites connected

### 6. Signal quality of video transmission:

Display the strength of video transmission connection signal between the drone and the remote controller

### 7. Power level of the smart battery: 16:47 Estimated Remaining Flight Time

### 8. Settings

Tap to view information about Safety, Calibration, Control, Camera and About.

#### Safety

Switch on or off Beginner Mode: If switched on, the drone will be confined to fly in a cylindrical space with a radius of 30 m and a height of 30 m and restricted to fly only in Video Mode.

Set measurement system (Metric or Imperial) and speed (Video/Normal/Sport)

Set drone behavior when signal lost: Return/Land/Hover

Return — the drone will automatically ascend to 120 m and return to the HOME point.

Land — the drone will land on the spot where it loses the signal.

Hover — the drone will hover in place where it loses the signal.

Set minimum return altitude and virtual fence.

Enable the Silent Return Mode: after enabling, the remote controller will no longer beep when the drone enters RTH mode in the future (To stop the current beeping, simply short press the power button on the remote controller).

Enable/disable Flight Safety Tips

Battery information: check the temperature, current, voltage and others of the smart battery.

#### Calibration

This sector includes compass calibration, remote controller calibration and drone re-pairing.

#### Control

Remote Controller Settings: Tap to switch control stick mode (Mode 1: Left Hand Throttle; Mode 2: Right Hand Throttle)

## Camera


General Settings: Tap to set white balance, gridlines, segmental recording, etc. Tap to check Micro-SD card capacity and format.

Other Settings: Enable/disable Telemetry Data.


## About

View device information, firmware information, App version, etc.

## 9. Shooting Information Display/Settings


 **Photo Mode:** displays photo format, EV (exposure value) and the remaining numbers of photos or the available capacity of the current microSD card.



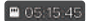
Tap  to switch between the display of the remaining numbers of photos or the available capacity of the current microSD card.

Tap  to set EV.

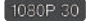
Display the photo format JPG.

 **Video Mode:** displays video resolution, EV (exposure value) and the remaining video recording time or the available capacity of the current microSD card.




Tap  to switch between the display of the remaining video recording time or the available capacity of the current microSD card.




Tap  to set EV.

Tap  to set video resolution and frame rate.  
2.5K: 30fps 1080P: 30fps

## 10. Shooting Information Display/Settings:

 to switch from shooting to video recording  to switch from video recording to shooting.

## 11. Shoot/Record button:

-  Video recording mode, tap to start video recording
-  Video recording in progress, tap to cancel
-  Shooting mode, tap to shoot picture

12. **Album:**  Preview or download shot videos or pictures in SD card.

## 13. Flight Safety Tips

Users can turn on/off Flight Safety Tips in App Settings -> Safety. After turning it on, flight-related tips or suggestions will be displayed on the lower right side of the flight interface.

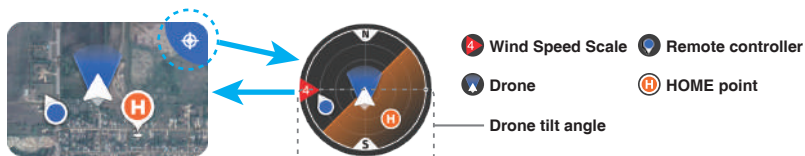
## 14. Display flight speed and distance

-  Horizontal distance from the drone to HOME point
-  Relative height from the drone to HOME point
-  Flight speed of the drone
-  Ascent/descent speed of the drone

## 15. Attitude Indicator/Thumbnail map





Tap the upper right corner to switch to Attitude Indicator Mode

Tap thumbnail map to switch to full-screen map




The attitude indicator displays information of drone direction, tilt angle, remote controller direction, HOME point and more.

The attitude indicator can show the angle and direction of the drone in real time as follows:

Legend				
Tilting direction of the drone	Tilt forward: the horizon line tilts towards the upper half of the attitude indicator	Tilt backward: the horizon line tilts towards the lower half of the attitude indicator	Tilt to the right: the horizon line tilts towards the right side	Tilt to the left: the horizon line tilts towards the left side


Different colors of the attitude indicator:

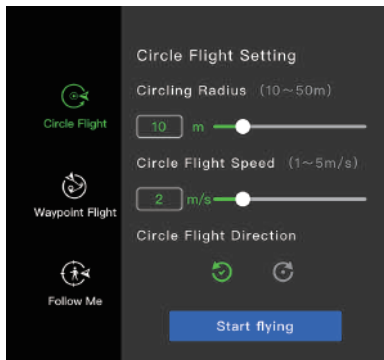
Legend	Description
	Green indicates that the drone is flying at a relatively small tilt angle, and optimal video quality can be achieved.
	Yellow indicates that the drone is flying at a relatively large tilt angle, and the video quality may be reduced.
	Red indicates that the drone is flying at a very large tilt angle. If the attitude indicator frequently turns red during flight, the drone may be encountering strong winds and the video quality can be compromised. Please fly the drone back and land it as soon as possible.



- When the icons of the drone and the remote controller both turn green, it indicates that the remote controller is facing the drone which guarantees the optimal communication signal.
- After the drone is powered on and enters GPS mode, the current GPS coordinates will be updated as the HOME point. Pay attention to the update prompt of the HOME point.

## 16. Intelligent Flight Modes

Intelligent Flight Modes include  Circle Flight,  Waypoint Flight and  Follow-Me Flight.




## 17. One-key takeoff, landing/return

The App will display different buttons based on drone status. Tap to initiate one-key takeoff, landing or return.

 Tap to unlock, take off and hover at a height of 1.2m

 Tap to land or auto return.

## 18. Display important information or status of drone

-  **Make sure to fully charge the mobile device prior to flight, because the power of the mobile device will be consumed even if it is charged by the remote controller.**
- Mobile cellular data is required when using the PotensicPro App. Please contact your wireless carrier for data charges.**
- While using the App, make sure to read and master the pop-up prompts and warning information of App to know the current status of the drone.**
- It is recommended to replace any outdated mobile device which may have a negative impact on user experience of App and lead to potential dangers. For any poor user experience and safety problems due to the use of an outdated mobile device, Potensic does not bear any liability.**

# 7. Flight

This chapter introduces safe flight practices and requirements.

## » 7.1 Requirements of Flight Environment



- Do not use the product in severe weather, such as gale, rain, snow and fog.
- Only fly in open areas. Tall structures and large metal structures may affect the accuracy of the onboard compass and GPS system and result in positioning failure. It is recommended to keep the drone at least 5m away from structures.
- Control the product within your sight and keep away from the obstacles and crowds.
- Do not use the product in places with high-voltage power lines, telecommunication base station or launching tower, to avoid interference of the remote controller.
- Please use the product with caution when altitude is over 3,000m for the flight performance can be affected when the performance of drone battery and power system is weakened due to environment factor.

## » 7.2 Precautions of Flight



1. Check if the remote controller, intelligent flight battery and mobile device are fully recharged.
2. Check if the drone is intact and propellers are installed correctly.
3. Check if the camera is working normally after power-on.
4. Check if App is running normally.
5. Check if SD card is inserted and make sure camera is clean.
6. Make sure the drone takes off on flat and hard surface, instead of sandstone or bush; the drone may fail to be unlocked if it has major vibration.
7. Please be careful when the drone takes off on surface of moving objects, such as running vehicle and ship.
8. GPS positioning and waypoint flight will be disabled in the south and north polar.
9. Do not use the product in extreme cold or hot place to avoid hazards.

## » 7.3 Connection

Please follow the steps below:

1. Please finish the steps in "3.5 Preparing the Remote Controller" and turn on the remote control.
2. Please finish the steps in "3.4 Preparing the drone" and turn on the remote control.
3. Launch App to view the connection status. Connection is finished when it shows .
4. Tap  to enter the flight interface.

---

 • It is advised to tap  and follow the animated guide to operate for first-time users.

---

## » 7.4 Flight Mode

Atom LT has three flight modes-Video/Normal/Sport, which can be switched via the App.

### Video Mode

Ascent speed: 2m/s, descent speed: 1.5m/s, flight speed: 6m/s

The drone enters Beginner Mode by default when being used for the first time. The flight speed will be limited to the same as in Video Mode to allow you to familiarize yourself with the controls of the drone.

### Normal Mode


Ascent speed: 4m/s, descent speed: 3m/s, flight speed: 10m/s

You can exit Beginner Mode after you have mastered adequate flight skills, and the drone will switch to Normal Mode by default.

### Sport Mode

Ascent speed: 5m/s, descent speed: 4m/s, flight speed: 16m/s

Video mode is recommended in aerial photography. Sport mode is recommended if you would like to get a speedy flight experience. Please pay more attention in Sport Mode flights as the the responsiveness of the drone significantly increases in Sport mode.

- 
-  • To ensure flight safety, Sport Mode is only accessible when the battery level is above 30% and the flight altitude exceeds 8 m. Once engaged, if the battery level falls below 30% or the flight altitude drops below 4 m, the drone will exit Sport Mode automatically.
- The maximum speed and braking distance of the drone significantly increase in Sport Mode. A minimum braking distance of 30 m (100 ft) is required in windless conditions to ensure safety.
-

## » 7.5 Compass Calibration

### 7.5.1 Scenarios Requiring Compass Calibration

1. Compass calibration is required for first-time use.
2. Flying the drone at a location more than 500 km (310 miles) away from its last flight.

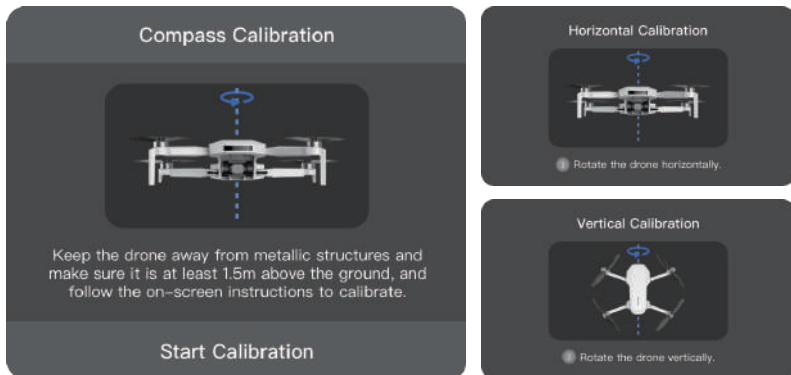
- **DO NOT** calibrate the compass in locations where magnetic interference may occur such as close to magnetite deposits or large metallic structures such as metal mines, steel reinforced basements, bridges, cars, or scaffolding.
- **DO NOT** carry objects that contain ferromagnetic materials such as mobile phones near the drone during calibration.
- **Make sure the drone is at least 1.5 m above the ground during the calibration.**

### 7.5.2 Calibration Procedure

Choose an open area to carry out the following procedure.

1. When calibration is required, the App will pop up the calibration interface automatically, just tap "Start calibration", and the tail indicator will alternatively flash in red and green.
2. Hold the drone horizontally and rotate it 360° till the app shows vertical calibration, and the tail indicator will alternatively flash blue and green.
3. Hold the drone vertically and rotate it 360° around a vertical axis till the App prompts the calibration completed.

You can also trigger compass calibration manually in the App: Settings-Calibration-Compass Calibration.



- **When you get the prompt "Calibration failed" in the App repeatedly, change the location and try the calibration procedure again.**
- **Do not calibrate compass while arms are folded.**

## » 7.6 Beginner Mode

The drone is automatically set to Beginner Mode for first-time use. In Beginner Mode:

1. The flight distance and height will be restricted at 0~30m
2. The speed level will be restricted to the same as in Video mode
3. Users operating the drone for the first time are suggested to learn and master the drone in Beginner Mode

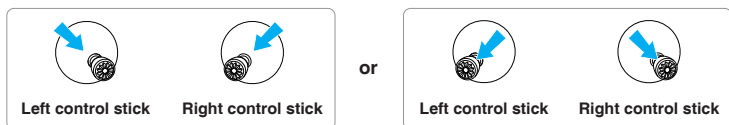
## » 7.7 Takeoff/Landing/Hovering

### 7.7.1 Manual Takeoff/Landing

#### Takeoff

##### Step 1: Start the motors

Use a combination stick command to start the motors. Push both sticks to the bottom inner or outer corner depending on your control stick mode to start the motors. Release both sticks simultaneously once the motors are spinning.



##### Step 2: Push throttle control stick to take off

Push the throttle control stick upwards gently as shown in the picture, release the control stick when the drone leaves ground and it will keep hovering.




#### Landing

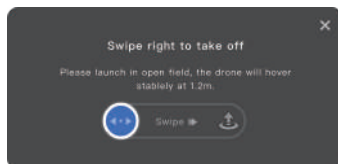
Pull the throttle control stick until the drone lands on ground. Release the throttle control stick when the motors are no longer spinning.

- ⚠️ **Take off from stable and level surface, do not take off from or land on the palm or by hand.**
- It is not suggested to take off at low battery, for it may affect the battery service life. Please handle it with caution and undertake the corresponding consequences if forced takeoff is required.
- When the drone is not in a level and stationary condition, stay at least 5 m away from the drone, and push both sticks to the bottom inner corner for 2 seconds to forcibly unlock the motors.
- Keep the distance over 0.5m between the drone and ground, for it may fail to enter good hovering status due to air flow when it is close to the ground.
- If the drone fails to be locked after landing due to anomaly, pull down the throttle control stick to the limit position for 3s and the drone will be locked by force.
- When the altitude difference between the landing and take-off point is  $>3\text{m}$  or  $<-3\text{m}$ , there may be a risk of the drone descending too rapidly and impacting the ground with full throttle. In such cases, it is essential for you to manually control an appropriate descent rate to ensure the drone lands safely and gradually.


### 7.7.2 One-key Takeoff/Landing

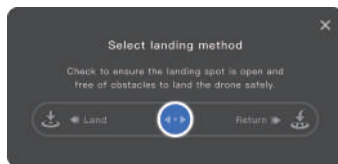
#### One-key takeoff

Tap one-key takeoff button  in App, then swipe right in the pop-up window to start the drone automatically then ascend to the height of 1.2m and maintain hovering.







#### One-key landing


Tap one-key landing button  in App, then swipe left in the pop-up window to land the drone, or swipe right to start returning.




## » 7.8 Smart Flight




### 7.8.1 Circle Flight


Description	Start circle flight, the drone will fly forwards by taking the current position as circle center until it reaches the starting point of circle flight; When user tap  in App, the drone will fly around the circle at a set speed and direction.
Adjustable parameter	User can set the radius, speed and direction of the Circle Flight in Circle Flight Setting.
How to start	When GPS signal is normal and flight height is $\geq 5\text{m}$ , tap  and select  in App.
How to exit	<ol style="list-style-type: none"><li>1. Tap  on the left to exit Circle Flight.</li><li>2. Move a control stick to stop Circle Flight. The drone will hover in place.</li><li>3. Short press the RTH/Pause button on the remote controller to stop Circle Flight. The drone will hover in place.</li></ol>

 • When circle flight is enabled, the drone will ascend to 5m automatically if its height is less than 5m.


 • Make sure there's no obstacle in the radius of circle flight and use the drone with caution as the drone does not support obstacle avoidance.

### 7.8.2 Follow Me Flight





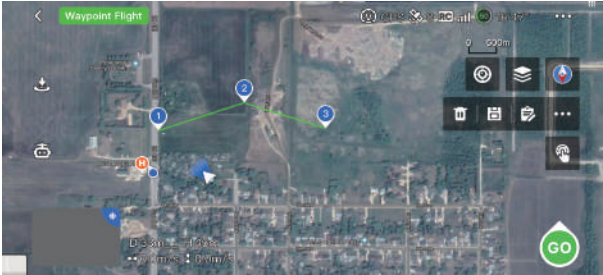

Description	Once follow me flight is enabled, the drone will follow your mobile device at the current distance; The flight height and yaw can be adjusted during follow me flight.
How to start	When GPS signal is strong and horizontal flight distance is 5-50m, tap  and select  in App.
How to exit	<ol style="list-style-type: none"><li>1. Tap  on the left to exit Follow Me Flight.</li><li>2. Short press the RTH/Pause button on the remote controller to stop Follow Me Flight. The drone will hover in place.</li></ol>

 • When follow me flight is enabled, the drone will ascend to 5m automatically if its height is less than 5m.


• The follow accuracy depends on the quality of the drone GPS signal and positioning accuracy of your mobile device.

 • The follow me flight depends on the positioning of your mobile device. The App requires positioning permission, otherwise this function cannot be enabled.

## 7.8.3 Waypoint Flight

<b>Description</b>	When waypoint flight function is enabled, User can freely set 1 or multiple waypoint coordinates in App map, and the drone will fly over the corresponding coordinates according to the sequence of set waypoint coordinates.
<b>How to start</b>	<p>When GPS signal is strong, tap  in App and select  to enter Waypoint Flight. Tap  in the map to pin multiple waypoints, after that tap  to start Waypoint Flight.</p> <p>User can set 2-30 waypoints; The figure in waypoint icon indicates the flight sequence. Meanwhile, User can delete certain waypoints, save current Waypoint Flight task, or choose from the saved waypoint flights task.</p> 
<b>How to exit</b>	<ol style="list-style-type: none"><li>1. Tap  on the left to exit Waypoint Flight.</li><li>2. Move a control stick(Except the throttle stick) to stop Waypoint Flight. The drone will hover in place.</li><li>3. Short press the RTH/Pause button on the remote controller to stop Waypoint Flight. The drone will hover in place.</li></ol>

 • During the waypoint flight, you can adjust the flight altitude by moving the throttle stick.

 • During the waypoint flight, once reaches the virtual fence, the drone will exit the waypoint flight and hover in place.

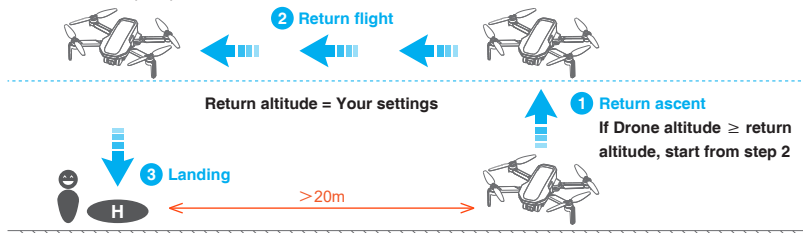
## » 7.9 Return(RTH)

### 7.9.1 Regular Return


Regular Return consists of three steps, as follows:

1. Ascent: The drone ascends to the preset return altitude (this step is skipped if the drone's altitude is already higher than the return altitude).
2. Level flight: The drone maintains a straight flight at the set altitude towards the home point.
3. Landing: Once it reaches the HOME point, the drone will automatically land and stop its propellers.

**Return to Home (RTH) The drone must be in GPS mode**



#### How to RTH

**One key RTH:** Press and hold the RTH button on the remote controller for 1s or tap  in App to pop up the menu, then swipe right to start the return (see 7.7.2).

**Auto RTH:** When either the drone battery level is low, the signal between the drone and the remote controller is lost or the drone is experiencing other abnormalities, Auto RTH will be triggered.



#### How to exit the RTH

Method 1: Tap  on the left of App to exit RTH.

Method 2: Briefly press the return button on the remote controller to exit RTH.

#### RTH Requirements

The drone must take off in GPS mode and successfully record the HOME point.


-  To ensure the safety of return flight, please set the appropriate return altitude in the app according to the flight environment.
  - During the return course, users can still adjust the flight altitude by toggling the throttle control stick.
  - When the drone is within 20 m of the HOME point and RTH is initiated, a pop-up window will appear in the App for the user to select between landing and return. If return is selected, the minimum return altitude is 5 m. The drone will land automatically if no action is taken after a countdown of 10 seconds. Please pay attention to flight safety.
  - Tall buildings or obstacles can block the transmission signal and cause signal loss. Do not fly behind buildings beyond the return height, otherwise the drone will collide with obstacles and crash during the return. If the drone enters ATTI mode due to GPS failure or GPS signal interference, it will not be able to return. During the return process, strong headwinds may be encountered. Lowering the flight altitude appropriately can help reduce power consumption. If the power is insufficient, the drone will perform a forced landing in place. Please pay attention to the prompts in PotensicPro App. Do not initiate the return when there are obstacles overhead, such as tall trees, otherwise the drone may crash during the climb.
- 
-  Please pay attention to return safety, because the drone does not support obstacle avoidance and may crash when colliding with obstacles during the return course.
  - For any GPS signal anomaly in communication loss return, the drone will maintain hovering at ATTI mode, until GPS signal is strong enough and the return will resume.


## 7.9.2 Descending Return


### How to Activate

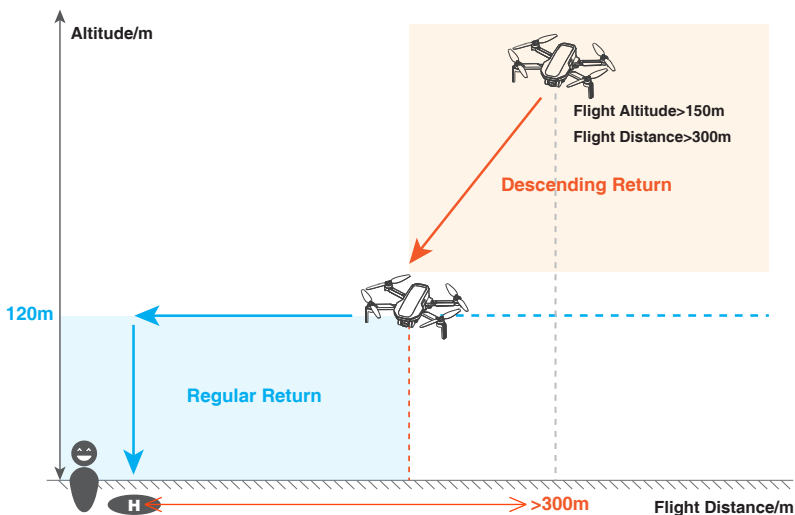
After 10 seconds into the RTH course, if the flight altitude is greater than 150m and the flight distance greater than 300m, the App will prompt a message for you to confirm whether to initiate the descending return. Once confirmed, the drone will start the descending return (the drone will descend its altitude while approaching the HOME point). When its altitude descends to 120m, the drone will switch to the regular return maintaining its current altitude till it reaches the HOME point and lands automatically.

### How to Exit

Tap  on the left of the App interface or keep pushing the throttle control stick up for 2 seconds to exit the descending return. The drone will switch to the regular return maintaining the current altitude.


-  **1. When encountering strong winds, the descending return can save power consumption and guarantee a more successful return.**
- 2. If the drone is disconnected from the remote controller during the descending return, it will switch to the regular return.**

 **• This product does not feature obstacle avoidance. Please exercise caution and prioritize flight safety during the return process.**



## » 7.10 Emergency Stop

See 5.3.1 Emergency stop for the detailed operation method.

 **• Emergency stop function is designed for preventing injuring pedestrians or damaging the valuables by propeller blades in case of drone failure. Please use it with caution, because stopping the motors mid-flight will cause the drone to crash.**

### » 8.1 Specification & Parameters

#### Drone

**Model:** DSDR04D

**Takeoff Weight:** < 249g (the takeoff weight includes battery and propeller blades)

**Folded Size:** 88x143x58mm

**Unfolded Size (propeller blades included):** 300x242x58mm

**Unfolded Size (propeller blades excluded):** 210x152x58mm

**Diagonal Distance:** 219mm

**Max Speed (Sport Mode):** Ascent speed: 5m/s; Descent speed: 4m/s; Flight speed: 16m/s

**Max Flight Time:** 40min

**Max Wind Speed Resistance:** 38km/h (Level 5)

**Operating Temperature:** 0°C–40°C

**GNSS:** GPS+GLONASS+Galileo+BeiDou

**Operating Frequency:** 2.400–2.4835GHz

**Transmission Power:** 2.4GHz: < 20dBm

**Hovering Accuracy Range:** Vertical:  $\pm 0.5$  m(with GPS Positioning)

Horizontal Flight:  $\pm 1.5$  m(with GPS Positioning)

**Extra Payload:** Not supported

**Max hovering time:** 37mins

---

#### Camera

**Lens Tilt Range:** +20°--90°

**CMOS:** 1/3"

**Effective Pixel:** 12MP

**ISO Range:** 100–6400

**Electronic Shutter Speed:** 1/30s–1/25000s

**FOV:** 118°

**Aperture:** F2.2

**Photo Resolution:** 2560\*1440

**Image Format:** JPG

**Video Resolution:** 2.5K @30fps; 1080P@30fps;

**Video Format:** MP4 (H.264)

**Max Video Bitrate:** 12Mbps

**Supported File System:** FAT 32, exFAT

**Type Of Supported Storage Card:** Micro SD card; 4–256GB SD card transmission speed  $\geq$  class10 or U1 standard

## Remote Controller

**Model:** DSRC02A

**Operation Frequency:** 2.402~2.483GHz

**Max Transmission Distance (unobstructed, free of interference):** 4km

**Operating Temperature:** 0°C~40°C

**Battery:** 3000mAh, lithium battery, 1S

**Transmitter Power (EIRP):** 2.4GHz:  $\leq 20\text{dBm}$

**Charging Interface:** TYPE-C

**Charging Specification:** 5V/1A

**Video Transmission System:** PixSync™ 2.0

**Image Transmission Quality:** 576P

**Latency (depending on environment and mobile device):** 200ms

**Supported Mobile Device Size:** Length: 170mm, Width: 100mm, Thickness: 6.5mm~8.5mm

---

## Smart Flight Battery

**Model:** DSBT02C

**Capacity:** 3000mAh


**Voltage:** 7.2V

**Battery Type:** Li-ion 2S

**Energy:** 21.6Wh

**Battery Weight:** 108g

**Working Temperature:** 0°C~40°C

- 
-  • The maximum flight time is measured at an ambient temperature of approximately 25°C in a windless laboratory, flying forward at a constant speed of 18 km/h (with no photo or video operations during the entire process), until the battery is completely depleted to 0%. Specific results will vary depending on the external environment, operation method, and firmware version. Please refer to the actual experience.
- The maximum hovering time is measured at an ambient temperature of approximately 25°C in a windless laboratory, hovering (with no photo or video operations during the entire process) until the battery is completely depleted to 0%. Specific results will vary depending on the external environment, operation method, and firmware version. Please refer to the actual experience.
-

## » 8.2 Post-Flight Checklist

- Make sure to perform a visual inspection so that the drone, remote controller, camera, flight batteries, and propellers are in good condition. Contact Potensic support if any damage is noticed.
- Make sure that the camera lens and vision system sensors are clean.
- Make sure to store the drone correctly before transporting it.

## » 8.3 Maintenance Instructions

To avoid serious injury to children and animals, observe the following rule:

1. Small parts, such as cables and straps, are dangerous if swallowed. Keep all parts out of reach of children and animals.
2. Store the Smart Flight Battery and remote controller in a cool, dry place away from direct sunlight to ensure the built-in LiPo battery does NOT overheat. Recommended storage temperature: between 22°C and 28°C (71°F and 82°F) for storage periods of more than three months. Never store in environments outside the temperature range of -10°C to 45°C (14°F to 113°F).
3. DO NOT allow the camera to come into contact with or become immersed in water or other liquids. If it gets wet, wipe dry with a soft, absorbent cloth. Turning on a drone that has fallen in water may cause permanent component damage. DO NOT use substances containing alcohol, benzene, thinners, or other flammable substances to clean or maintain the camera. DO NOT store the camera in humid or dusty areas.
4. Check every drone part after any crash or serious impact. If there are any problems or questions, contact Potensic support.
5. Regularly check the Battery Level Indicators to see the current battery level and overall battery life. The battery is rated for 250 cycles. It is not recommended to continue use afterward.
6. Make sure to transport the drone with the arms folded when powered off.
7. Make sure to transport the remote controller with antennas folded when powered off.
8. The battery will enter sleep mode after long-term storage. Charge the battery to exit from sleep mode.
9. Store the drone, remote controller, battery, and charger in a dry environment.
10. Remove the battery before servicing the drone (e.g., cleaning or attaching and detaching the propellers). Make sure that the drone and the propellers are clean by removing any dirt or dust with a soft cloth. Do not clean the drone with a wet cloth or use a cleanser that contains alcohol. Liquids can penetrate the drone housing, which can cause a short circuit and destroy the electronics.
11. Make sure to turn off the battery to replace or to check the propellers.

## » 8.4 Troubleshooting Procedures

1. Why can the battery not be used before the first flight?  
The battery must be activated by charging before using it for the first time.
2. No function  
Check if the Smart Flight battery and the remote controller are activated by charging. If the problem persists, contact Potensic support.
3. Power-on and start-up problems  
Check if the battery has power. If yes, contact Potensic support if it cannot be started normally.

#### 4. SW update issues

Follow the instructions in the user manual to update the firmware. If the firmware update fails, restart all the devices and try again. If the problem persists, contact Potensic support.

#### 5. Shutdown and power-off problems

Contact Potensic support.

#### 6. How to detect careless handling or storage in unsafe conditions

Contact Potensic support.

## » 8.5 Risk and Warnings

When the drone detects a risk after powering on, there will be a warning prompt on PotensicPro. Pay attention to the list of situations below.

1. If the drone status is not suitable for takeoff.
2. If the compass experiences interference and needs to be calibrated.
3. Follow the on-screen instructions when prompted.

## » 8.6 Disposal



Observe the local regulations related to electronic devices when disposing of the drone and remote controller.

### Battery Disposal

Dispose of the batteries in specific recycling containers only after a complete discharge. DO NOT dispose of the batteries in regular trash containers. Strictly follow the local regulations regarding the disposal and recycling of batteries.

Dispose of a battery immediately if it cannot be powered on after over-discharging.

If the Smart Flight Battery cannot be fully discharged, contact a professional battery disposal/recycling agency for further assistance.

## » 8.7 C0 Certification

ATOM LT (DSDR04D) is compliant with C0 certification requirements.

<b>Model:</b>	DSDR04D
<b>UAS Class:</b>	C0
<b>Maximum Take-Off Mass (MTOM):</b>	248g
<b>Maximum Propeller speed:</b>	18700RPM

### MTOM Statement

The MTOM of ATOM LT (Model DSDR04D), including the Smart Flight Battery, Propellers, and a microSD card, is 248 g to comply with C0 requirements.

Users must follow the instructions below to comply with the MTOM requirements for each model:

1. DO NOT add any payload to the drone except the items listed in the List of Items including qualified accessories section.
2. DO NOT use any non-qualified replacement parts, such as smart flight batteries or propellers, etc.
3. DO NOT retrofit the drone.

## List of Items, including qualified accessories

### For C0

Item	Model Number	Dimensions	Weight
Propellers	DSDR04B-PPS	119.4×63.8mm (Diameter×Thread Pitch)	0.65g (each piece)
Smart Flight Battery	DSBT02C	83.7×42.5×34.5 mm	Approx. 108g
microSD Card*	N/A	15×11×1.0mm	Approx. 0.3g

## List of Spare and Replacement Parts

### For C0

1. ATOM LT Propellers
2. ATOM LT Smart Flight Battery

## Remote Controller Warnings

### Model: DSRC02A

If the remote controller is disconnected from the drone, the PotensicPro App will prompt an on-screen note, and the drone will perform the preset behavior when the remote controller signal is lost. The remote controller will shut down automatically after 20 minutes of no operation.

- Avoid interference between the remote controller and other wireless equipment. Make sure to turn off the Wi-Fi on nearby mobile devices. Land the drone as soon as possible if there is interference.
- DO NOT operate the drone if lighting conditions are too bright or dark when using a mobile phone to monitor the flight. Users are responsible for correctly adjusting the display brightness when using the monitor in direct sunlight during flight operation.
- Release the control sticks or press the flight pause button if an unexpected operation occurs.

## EASA Notice

Make sure to read the Drone Information Notices document included in the package before use. Visit the link below for more EASA notice information on traceability.

<https://www.easa.europa.eu/en/document-library/general-publications/drones-information-notices>

## Original instructions

This manual is provided by Potensic Intelligent Co., Ltd. and the content is subject to change.  
Address: Room 1901, Jinqizhigu Building, Tangling Road, Nanshan District, Shenzhen, China.



# WARNING

**DANGER**Only suitable  
for ages 16+

**Warning:** The product should only be used by adults and children over 16 years. Adult supervision is required for children under 16 years.

**Hinweis:** Dieses Produkt ist für die Erwachsene und die Kinder ab 16 Jahren. Die Kinder unter 16 Jahren müssen von Erwachsenen beaufsichtigt werden.

**Avertissement:** Ce produit est destiné aux adultes et aux enfants de plus de 16 ans. Les enfants de moins de 16 ans doivent être surveillés par des adultes.

**Avvertimento:** Questo prodotto è destinato all'uso per i adulti e bambini di età superiore ai 16 anni. I bambini di età inferiore ai 16 anni devono essere sorvegliati da un adulto.

**Advertencia:** Este producto es para adultos y niños mayores de 16 años. Los niños menores de 16 años deben ser supervisados por adultos.

**警告:** この製品は、大人と16歳以上の子供には使用対象です。16歳未満の子供は大人の監視が必要です。



صنعت وفقاً للمواصفات والمعايير العالمية

**Tested according to international standards****WARNING:**NOT SUITABLE FOR  
CHILDREN UNDER 3 YEARS  
DUE TO SMALL PARTS

هتلاذارا بزى كودان زير ٣ سال  
مناسب نيست. دزاري قطعات كوچك است  
تحتوي: غير ملائم للاطفال تحت ثلاث (٣) سنوات بسبب  
لقطعات الصغيرة  
COUNTRY OF ORIGIN: CHINA  
بلد المنشأ: الصين

**WARNING:****CHOKING HAZARD—Small parts.**  
Not for children under 3 years.**Drone FCC ID: 2AYUO-DSDR04B****Remote controller FCC ID: 2AYUO-DSRC02A**

Changes or modifications not expressly approved by the party responsible for compliance could void the user's authority to operate the equipment.

This device complies with Part 15 of the FCC Rules. Operation is subject to the following two conditions:

- (1) This device may not cause harmful interference, and
- (2) This device must accept any interference received, including interference that may cause undesired operation.

Note: This equipment has been tested and found to comply with the limits for a Class B digital device, pursuant to Part 15 of the FCC Rules. These limits are designed to provide reasonable protection against harmful interference in a residential installation. This equipment generates, uses, and can radiate radio frequency energy, and if not installed and used in accordance with the instructions, may cause harmful interference to radio communications. However, there is no guarantee that interference will not occur in a particular installation. If this equipment does cause harmful interference to radio or television reception, which can be determined by turning the equipment off and on, the user is encouraged to try to correct the interference by one or more of the following measures:

- Reorient or relocate the receiving antenna.
- Increase the separation between the equipment and receiver.
- Connect the equipment into an outlet on a circuit different from that to which the receiver is connected.
- Consult the dealer or an experienced radio/TV technician for help.

This equipment complies with FCC radiation exposure limits set forth for an uncontrolled environment. This equipment should be installed and operated with a minimum distance of 20cm between the radiator & your body. This transmitter must not be co-located or operating in conjunction with any other antenna or transmitter.

**Manufacturer: Shenzhen Potensic Intelligent Co., Ltd.****Address: Room 1901, Jinqizhigu Building, Tangling Road, Nanshan District, Shenzhen, China**

EC REP

E-CrossStu GmbH, 69 Mainzer Landstrasse, Frankfurt am Main, 60329, Hessen,  
Germany (E-crossstu@web.de) +49 069332967674

UK REP

YH Consulting Limited, C/O YH Consulting Limited Office 147, Centurion House,  
London Road, Surrey, TW18 4AX (H2YHUK@gmail.com) +44 07514-677868

R 214-113197

**MADE IN CHINA**